



estudio
cerámico

An Indo-Spanish Joint Venture

Live life the
Moroccan
way

30x30cm

Live life the Moroccan way

The design world is currently enamoured of these colorful patterned cement tiles, but they have actually been glamorous & fashionable since centuries.

If your home is traditional, minimalist, contemporary, modern, Persian, Moorish, Spanish or mid-century then this is the perfect tile surface for your surroundings.

Live life the
Moroccan
way

**Regal
Glam**



BN 30571



▲ ACTUAL TILES IMAGE



30x30cm **Elegant**
series



estudio
cerámico

An Indo-Spanish
Joint Venture

Carolina Blue



▲ ACTUAL TILES IMAGE

NEW
ARRIVAL

30x30cm **Elegant**
series

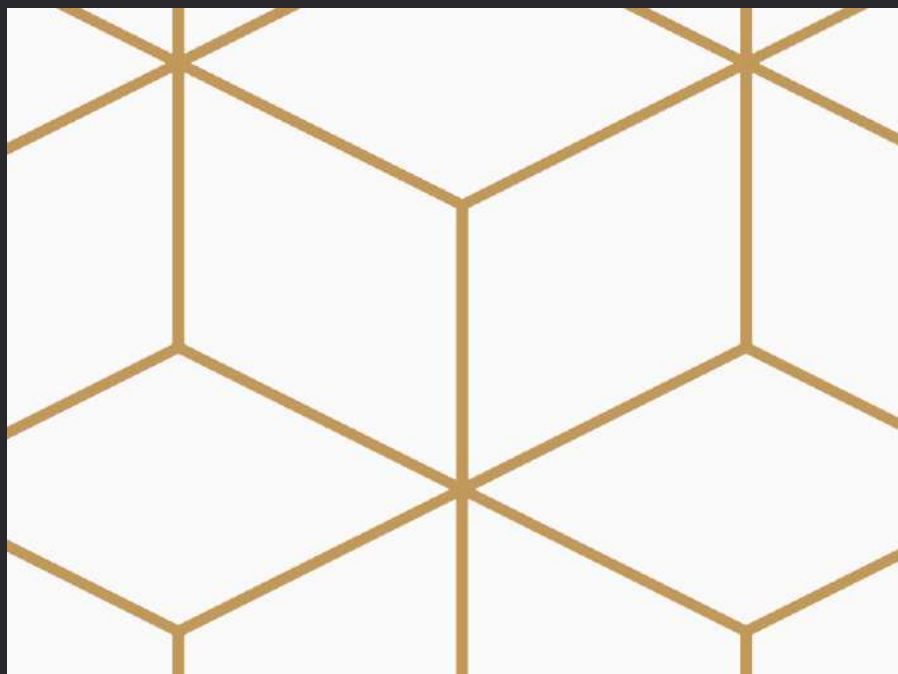
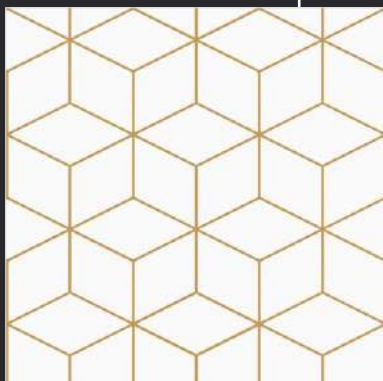
NT 30713





An Indo-Spanish
Joint Venture

Alementary Yellow



▲ ACTUAL TILES IMAGE



30x30cm

Artistic
series

NT 30724



Live life the
Moroccan
way

Alham Aqua



▲ ACTUAL TILES IMAGE

30x30cm **Elegant**
series

30204





An Indo-Spanish
Joint Venture

Alham Grey



30203



▲ ACTUAL TILES IMAGE

30x30cm **Elegant**
series



Live life the
Moroccan
way

Seville
Blue



▲ ACTUAL TILES IMAGE

30x30cm **Elegant**
series

30221



Live life the
Moroccan
way

Bruno
Blue



30215



▲ ACTUAL TILES IMAGE

30x30cm **Elegant**
series





An Indo-Spanish
Joint Venture

Bruno Brown



30216



▲ ACTUAL TILES IMAGE

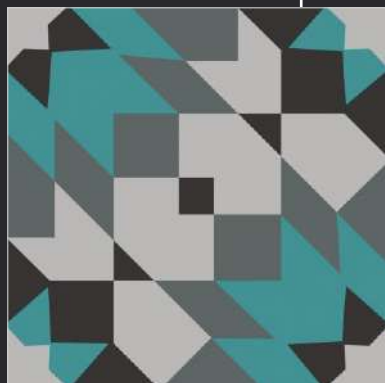
30x30cm **Elegant**
series



estudio
cerámico

An Indo-Spanish
Joint Venture

Tubo



30218



▲ ACTUAL TILES IMAGE

30x30cm **Elegant**
series



Live life the
Moroccan
way

**Rodin
Green**



30219



▲ ACTUAL TILES IMAGE

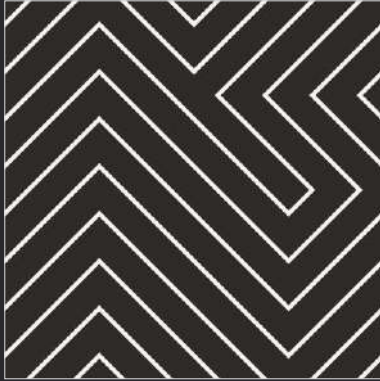
30x30cm *Elegant*
series




estudio
cerámico

An Indo-Spanish
Joint Venture

Onice Dark



30118



▲ ACTUAL TILES IMAGE

30x30cm Artistic
series



Live life the
Moroccan
way

Klimt



30222



▲ ACTUAL TILES IMAGE

30x30cm **Elegant**
series




estudio
cerámico

An Indo-Spanish
Joint Venture

Azraq Amberz



30224



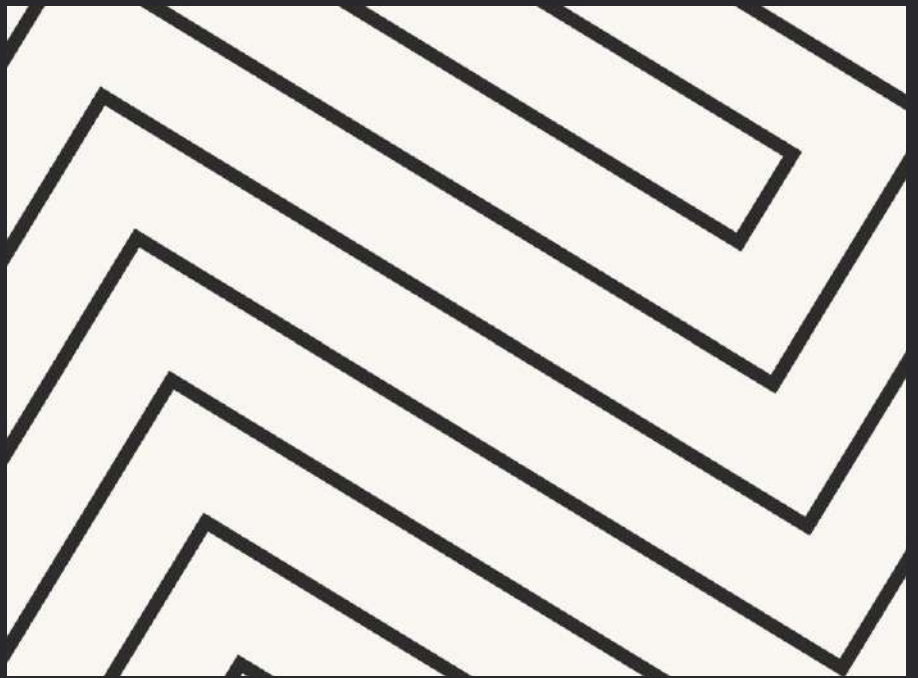
▲ ACTUAL TILES IMAGE

30x30cm *Elegant*
series



Live life the
Moroccan
way

Onice
Light



▲ ACTUAL TILES IMAGE

30x30cm **Artistic**
series

30108

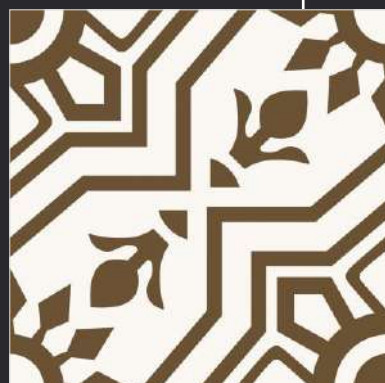


Live life the
Moroccan
way

Ayaan
Metal

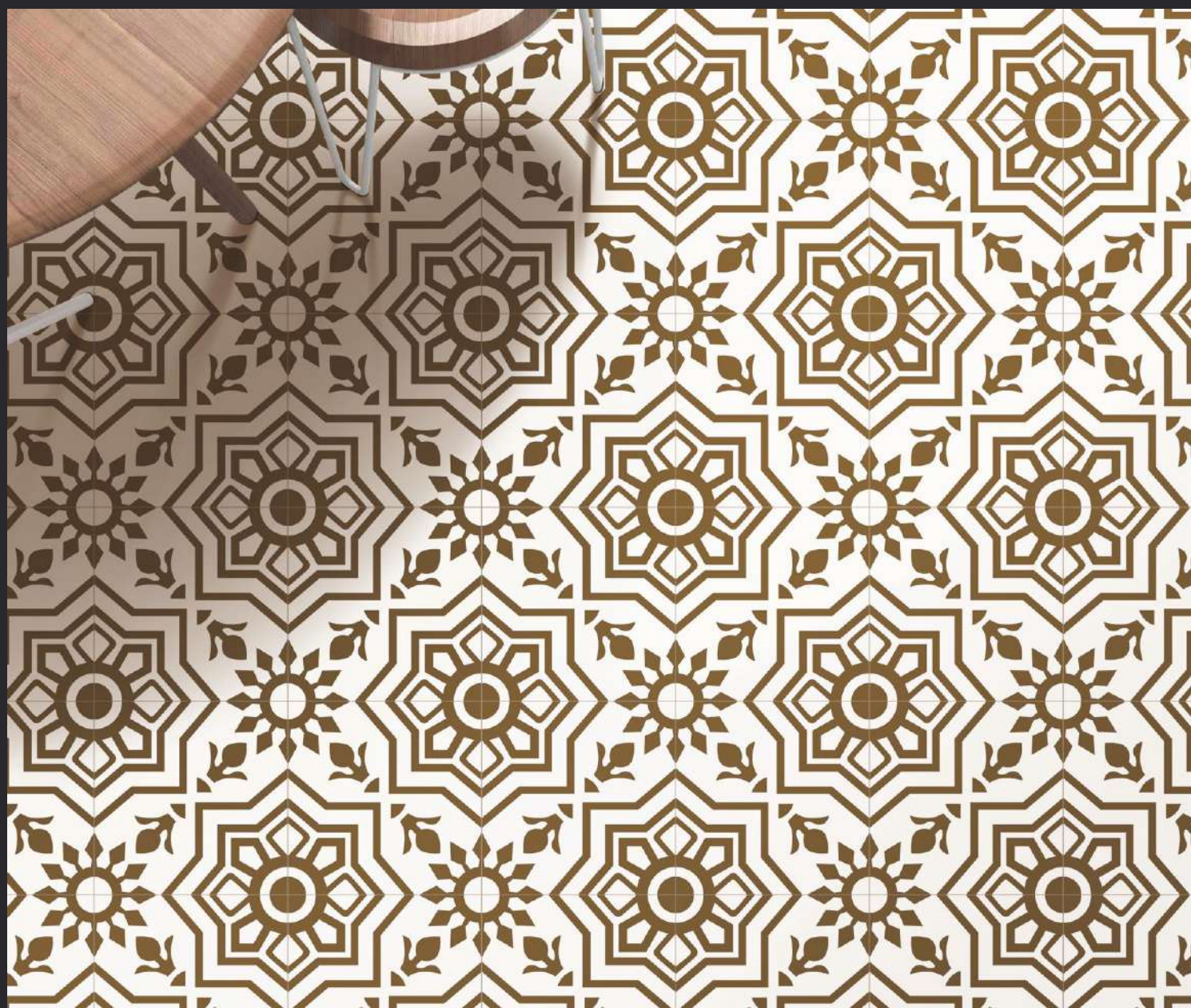


▲ ACTUAL TILES IMAGE



30x30cm **Artistic**
series

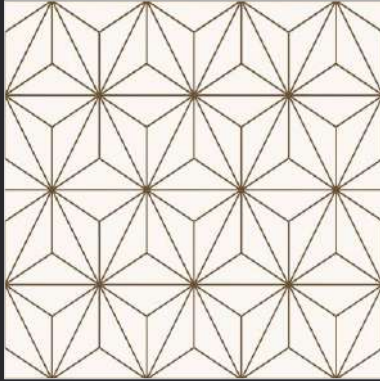
30112



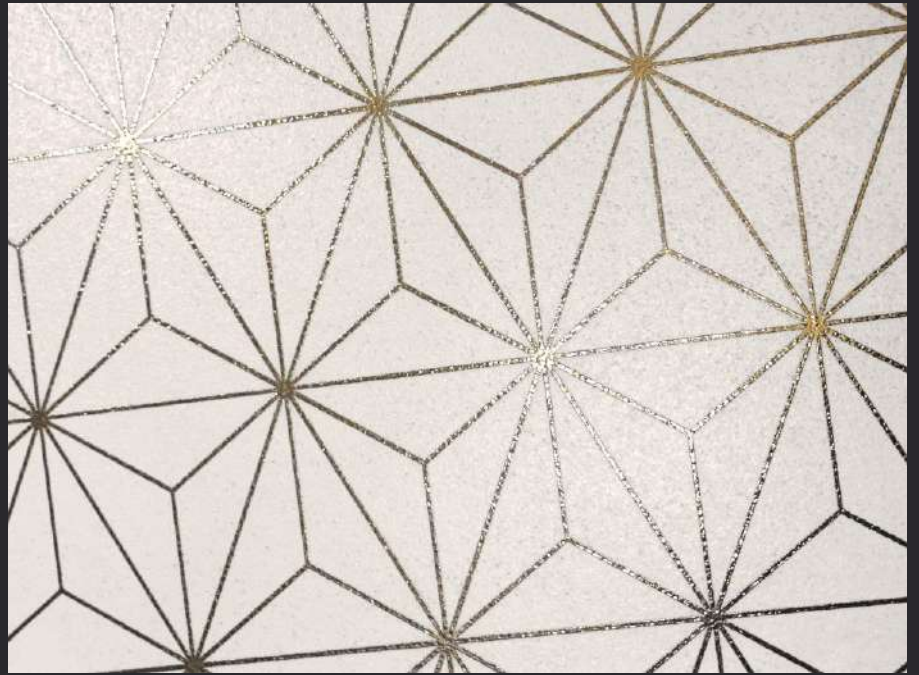


An Indo-Spanish
Joint Venture

Egal Bianco Metal



30115



▲ ACTUAL TILES IMAGE

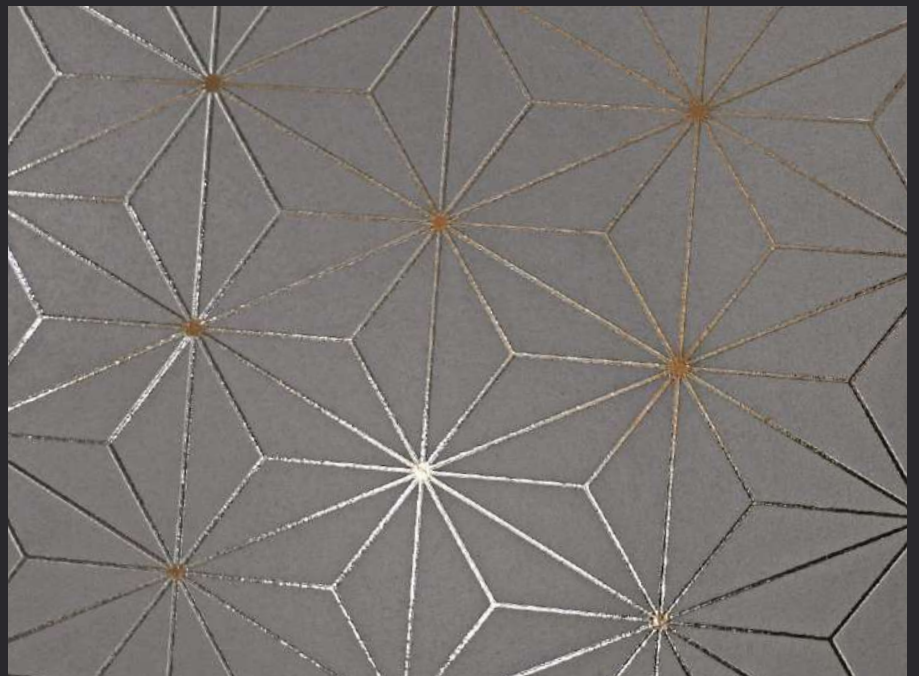
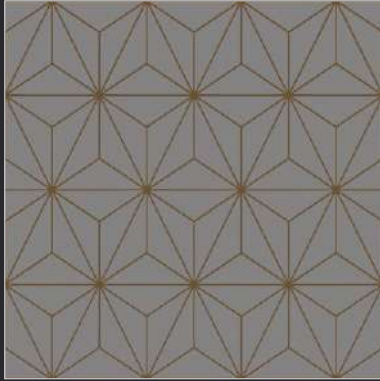
30x30cm

Artistic
series



Live life the
Moroccan
way

Egal Coal
Metal



▲ ACTUAL TILES IMAGE

30x30cm **Artistic**
series

30116



TECHNICAL SPECIFICATION

| DIMENSION & SURFACE QUALITY | International Specifications ISO 13006/EN 176 Group & IS 15622 : 2006 | VALUE | METHOD OF TESTING |
|--|--|-----------------------|-------------------|
| Deviation In Length | ±0.6% | ±0.1% | ISO 10545 Pt 2 |
| Deviation In Thickness | ±5% | ±2% | ISO 10545 Pt 2 |
| Straightness Of Sides | ±0.5% | ±0.1% | ISO 10545 Pt 2 |
| Rectangularity | ±0.6% | ±0.2% | ISO 10545 Pt 2 |
| **Surface Flatness | ±0.5% | ±0.2% | ISO 10545 Pt 2 |
| **Glossiness | - | Min. 90% Reflection | Glossmeter |
| PHYSICAL & THERMAL PROPERTIES | | | |
| Water Absorption | <0.5% | <0.05% | ISO 10545 Pt 3 |
| Mohs Hardness* | >6 | 6 | EN 101 |
| Flexural Strength | 35 N/mm ² | >46 N/mm ² | ISO 10545 Pt 4 |
| Abrasion Resistance** | <175 mm ³ | <144 mm ³ | ISO 10545 Pt 7 |
| **Skid Resistance (Friction Coefficient) | >0.4 | >0.4 | ISO 10545 Pt 17 |
| Breaking Strength | 1113 N | 2800 N | ISO 10545 Pt 4 |
| Density (g/cc) | >2.0 | >2.4 | ISO 10545 Pt 3 |
| Frost Resistance | Frost Proof | Frost Proof | ISO 10545 Pt 9 |
| Thermal Shock Resistance | No Damage | No Damage | ISO 10545 Pt 9 |
| Thermal Expansion | <9 x 10 ⁻⁶ | <6 x 10 ⁻⁶ | ISO 10545 Pt 8 |
| Moisture Expansion | Nil | Nil | ISO 10545 Pt 10 |
| CHEMICAL PROPERTIES | | | |
| Chemical Resistance | No Damage | No Damage | ISO 10545 Pt 13 |
| Colour Resistance | No Damage | No Damage | DIN 51094 |
| Stain Resistance | Resistant | Resistant | ISO 10545 Pt 14 |

PACKING DETAILS

| Dimensions in MM | Thickness | Pieces/Box | Area Coverage | Weight |
|------------------|-----------|------------|---------------|----------------|
| 300x300x12 | 12 | 10 | 0.9 | 1.08 (Approx.) |

Note: Colour Shown are as accurate as the limitations of the printing process will allow. Prospective customers are advised to inspect a sample of the tile before ordering. Every effort has been made to ensure the accuracy of the information given. However, the company reserve the right to change the specifications without prior notice. Sometime variations in shade or size being inherent to ceramic industry may occur. Before fixing, we advise you to follow the fixing instructions on the cartons of the tiles as no responsibility can be accepted by the company once the tiles have been fixed.



estudio ceramico has wide range of wall tiles with Revolutionary Technology that compaction of raw materials and is able to produce surfaces that combine excellent aesthetic quality with outstanding technical performance.



An Indo-Spanish
Joint Venture

www.estudioceramico.in